

PRODUCT CATALOGUE

ZETI



Belgian design furniture.

NEST

TABLE OF CONTENTS

01.

Overview - p. 7

02.

Craftsmanship - p. 8

03.

Designers - p. 14

*Luc Vincent
Marc Th. van der Voorn
Studio Segers
bOb Van Reeth
Axel Enthoven
ZET design team
Jun Gobron*

04.

History - p. 22

01.

Buzzy chair - p. 24

02.

Com chair - p. 28

03.

Cup Cup chair - p. 34

04.

Epic chair - p. 38

05.

Ingrid chair - p. 42

06.

Mine chair - p. 48

07.

T-Bone chair - p. 52

08.

Yado chair - p. 56

09.

Gala chair - p. 60

10.

Grangala chair - p. 64

11.

New Gala chair - p. 68

12.

Lisa chair - p. 72

13.

Luka chair - p. 74

14.

Grace chair - p. 76

15.

Host chair - p. 80

16.

Wood colors - p. 84

01. COLLECTION OVERVIEW

BUZZY
P. 24



COM
P. 30



CUPCUP
P. 34



EPIC
P. 38



INGRID
P. 42



MINE
P. 46



T-BONE
P. 52



YADO
P. 56



GALA
P. 60



**GRAN
GALA**
P. 64



**NEW
GALA**
P. 68



LISA
P. 72



LUKA
P. 74



GRACE
P. 76



HOST
P. 80



02. CRAFTS- MANSHIP

CRAFTSMANSHIP

ZET is a Belgian producer of solid wooden chairs and tables with a history which goes back to 1923. We keep faithful to qualitative wood solutions because precisely there our knowhow and craftsmanship are situated. Quality is the key in combination with continuous efforts to innovate.

ZET stands for craftsmanship with a contemporary character. Despite the fact that ZET invests continuously in machinery, each finished product is a prime example of skilled craftsmanship.

Each machine is operated by craftsmen and each product is designed, checked and completed by craftsmen. Due to the attention paid to the smallest details, ZET is able to deliver chairs and tables which emphasize the passion of real craftsmanship.



DURABILITY

We do not consider durability as a fashion trend. The environment is as far as possible respected. Our production in durable materials as beech and oak speaks for itself. Both production unit and offices are heated with our own recycled wood waste. Spraying with waterborne varnishes and stains automatically lead to a zero toxic emission.

Wood shavings, polyethylene plastic, metal and cardboard are recycled in separate containers. Energy is generated from photovoltaic panels on the roof and green zones are integrated in the company.

Our PEFC certificate shows our involvement with sustainable forestry. As a consequence the ecological footprint of ZET is reduced to an absolute minimum.

We believe in long-lasting relationships, based on trust. After all, if you can't trust the things you sit on, what else?



We got your back

We are Zet. We are a Belgian family business with a long history in building furniture. We manufacture durable, design chairs and tables for businesses. At ZET, we create with 4 standards in mind: **comfort, durability, simplicity & functionality**. Furniture must be reliable and pleasing, it's a part of your identity.

03. THE DESIGNERS BEHIND OUR MASTERPIECES

Luc Vincent



Marc Th. van der Voorn



ZET design team



Jun Gobron



Axel Enthoven



Studio Segers



bOb Van Reeth



Every chair is a creation that is designed by the best. Every chair is unique and reflects the designer's passion and love for functionality.

LUC VINCENT

Luc Vincent is a Belgian product and graphic designer who works and lives in Brussels. He cannot be pigeonholed into one particular discipline. He's a versatile designer with a focus on functionality.

MARC TH. VAN DER VOORN

Marc Th. van der Voorn is an established Dutch designer based in Utrecht, working in the field of product design. His approach is practical, hands-on and collaborative. His experience in design, development and practical know-how makes him a dedicated partner.

ZET DESIGN TEAM

ZET is now internationally renowned, but continues to be firmly rooted in tradition. The relentless pursuit of quality combined with an unceasingly innovative spirit, stands out in each and every one of its designs.

STUDIO SEGERS

Studio Segers was founded by the product designers Wim Segers and his wife, graphic designer Rita Westhovens. Twenty years later, in 2009, they were joined by their son Bob and Bob's spouse Marjan Brants.

BOB VAN REETH

Bob Van Reeth is an iconic Belgian architect. Van Reeth's work is not based on a certain architectural form, but on the living and working patterns of people.

AXEL ENTHOVEN

Axel Enthoven is a Belgian designer. He is known for his participation in the jury of the program 'De bedenkers'. Enthoven and his company won several prizes, including the Red Dot and IF.

JUN GOBRON

Jun Gobron is a Belgian Japanese Interior & Product Designer. He decided to pursue his passion for design and took up studies in Interior Architecture at St-Luc Brussels. He works now as an Interior Designer in an Architecture agency.

04. WHO ARE WE?

A PIECE OF HISTORY



ZET is a Belgian design brand finding its roots in the lap of De Zetel nv. Our company, originally founded in **1923** and internationally known for its innovative wooden furniture, is still led by the founding family.

ZET creates its own **specific identity** by focusing on the collaboration with ambitious designers and artists.

From a small furniture producer 'ZET' grew up to a big player with a weekly output of some 3.000 to 4.000 chairs.

Founder Cyriel Behaegel had only one wish back in 1923. He wanted to create a chair which would offer the same comfort as an sofa. This explains the name 'ZET'.

Belgian
design
furniture.

THE COLLECTION





01. BUZZY



SPECIFICATIONS

Material Oak & Beech

Finishing Lacquer, paint, stain

Designer ZET design team

Fabrics Kvadrat, Camira, Gabriel...

***note** ZET offers other configurations as well. Just ask us!

ABOUT THE DESIGN

Just like the Canta and Cantina chairs the Buzzy collection was created by 'ZET design team' combining a shell-shaped seat with a cruciform base, a proven formula that moulds a shell out of wood to create a sleek look. The slightly protruding legs are a feature of the graceful simplicity that underpins this collection.



Buzzy chair
Designed by 'ZET design team'



BUZZY
THE FAMILY

BUZZY



BUZZY 03



BUZZY 03 KL62



BUZZY 03 KL82



BUZZY KL62



BUZZY KL82



BUZZY T H76



BUZZY T H47



BUZZY T H47



BUZZY T H47



BUZZY T H106





02. COM



SPECIFICATIONS

Material Oak

Finishing Lacquer, paint, stain

Designer ZET design team

Fabrics Kvadrat, Camira, Gabriel...

**note* ZET offers other configurations as well. Just ask us!

ABOUT THE DESIGN

The Com stool - small but sophisticated - is a small piece of finesse. This Belgian design chair is not big, but very functional. Thanks to its size you can use it in different rooms as a side. We offer a large variety of colors and possibilities of this stool. Contact us to see what the different options are.

ZET



COM
THE FAMILY

COM 03 K71



COM 03 K47



COM table T H68



COM table T H44





03. CUP CUP



SPECIFICATIONS

Material Oak & Beech

Finishing Lacquer, paint, stain

Designer Luc Vincent

Fabrics Kvadrat, Camira, Gabriel...

* **note** ZET offers other configurations as well. Just ask us!

ABOUT THE DESIGN

This Cup Cup collection designed by Luc Vincent, is all about curved lines, which ensures the ergonomic comfort of both the seat and the backrest. They give the utmost support while remaining discrete and elegant.



CUP CUP
THE FAMILY



CUP CUP



CUP CUP 01



CUP CUP 01 +A



CUP CUP lounge 01



CUP CUP KL62



CUP CUP 03



CUP CUP 03 +A



CUP CUP lounge 03



CUP CUP KL82



CUP CUP 04



CUP CUP 04 +A



CUP CUP 03 KL62



CUP CUP 01 KL62



CUP CUP +A



CUP CUP lounge



CUP CUP 03 KL82



CUP CUP 01 KL82





04. EPIC



SPECIFICATIONS

Material Oak

Finishing Lacquer, paint, stain

Designer Marc Th. van der Voorn

Fabrics Kvadrat, Camira, Gabriel...

***note** ZET offers other configurations as well. Just ask us!

ZET

ABOUT THE DESIGN

The Epic chair is about perseverance, which resulted in the distinctive back of the Epic chair. It literally splits the frame in two. A team of dedicated craftsmen at ZET joined it sturdy back together.

For Marc pushing the boundaries is what makes the process of designing fascinating and rewarding.





EPIC
THE FAMILY

EPIC



EPIC 01



EPIC 03



EPIC lounge



EPIC lounge 01



EPIC lounge 03



EPIC KL62



EPIC 01 KL62



EPIC 03 KL62



EPIC KL82



EPIC 01 KL82



EPIC 03 KL82





05. INGRID



SPECIFICATIONS

Material Beech

Finishing Lacquer, paint, stain

Designer Luc Vincent

Fabrics Kvadrat, Camira, Gabriel...

Chair Stackable (ST)

***note** ZET offers other configurations as well. Just ask us!

ABOUT THE DESIGN

The Ingrid chair by designer Luc Vincent is reminiscent of a beautiful Danish blonde. The light-coloured wood base evokes a slender athletic form which is muscular without looking burly. Similarly to the Cup Cup collection, Luc Vincent has selected a range of different colours for the backrest.



INGRID
THE FAMILY

INGRID



INGRID ST



INGRID 03



INGRID +A



INGRID +A ST



INGRID 03 +A (ST)



INGRID K47



INGRID K62



INGRID K82





06. MINE



SPECIFICATIONS

Material Oak & Beech

Finishing Lacquer, paint, stain

Designer Studio Segers

Fabrics Kvadrat, Camira, Gabriel...

Chair Stackable (ST)

***note** ZET offers other configurations as well. Just ask us!

ABOUT THE DESIGN

Mine from Studio Segers is a collection of seating (chairs, stacking chairs, armchairs, and stools with backrest) and matching tables in a range of sizes with a modular design. The supporting structure of the Mine collection is in solid beech (in several colours) or oak, while the seats and backrests are in plywood.



MINE
THE FAMILY







07. T-BONE



SPECIFICATIONS

Material Oak

Finishing Lacquer, paint, stain

Designer bOb Van Reeth

Fabrics Kvadrat, Camira, Gabriel...

Chair Stackable (ST)

***note** ZET offers other configurations as well. Just ask us!

ABOUT THE DESIGN

The T-Bone collection has a strong graphic design component in keeping with bOb Van Reeth's architectural style.

The collection is the outcome of a detailed study of forms leading to sculpted flared legs which add an overall sense of lightness to the solid wood chairs. The T-Bone is a tasteful and timeless collection.



T-BONE
THE FAMILY

T-BONE



T-BONE K47

T-BONE ST



T-BONE K62

T-BONE +A



T-BONE K82



T-BONE KL62



T-BONE KL82



T-BONE T H76





Photo: Alexandre Bibault

08. YADO



SPECIFICATIONS

Material Beech

Finishing Lacquer, paint, stain

Designer Jun Gobron

Fabrics Kvadrat, Camira, Gabriel...

***note** ZET offers other configurations as well. Just ask us!

ABOUT THE DESIGN

Japanese design, Belgian-made

The Yado is a unique chair, designed by Japanese renowned designer Jun Gobron. This chair is a constellation of clean lines, which gives this design a minimalistic vibe. Jun made this strong piece of Japanese design especially for the Yadoya Hotel. The connections made by the oak decks are clearly visible, which gives this chair a rather unique look.



Photo: Jan Verlinde



YADO
THE FAMILY

YADO



YADO KL67



YADO lounge





09. GALA



SPECIFICATIONS

Material Oak

Finishing Lacquer, paint, stain

Designer Axel Enthoven

Fabrics kvadrat, Camira, Gabriel...

Chair Stackable (ST)

***note** ZET offers other configurations as well. Just ask us!

ABOUT THE DESIGN

The Gala chair was born in the creative mind of the famous Antwerp designer Axel Enthoven. It is not a fortunate or happy unplanned coincidence but a solid oak chair, stackable, not trendy nor fashionable but tested to the real world. This is a chair with class, the perfect combination of a simple design and a classic look. The Gala chair offers maximum comfort.



GALA
THE FAMILY

GALA



GALA ST



GALA +A



GALA seat



GALA seat HB



GALA cube



GALA rooster





10. GRANGALA



SPECIFICATIONS

Material Oak

Finishing Lacquer, paint, stain

Designer Axel Enthoven

Fabrics Kvadrat, Camira, Gabriel...

Extra Square stitching

***note** ZET offers other configurations as well. Just ask us!

ABOUT THE DESIGN

The Grangala chair was born in the creative mind of the famous Antwerp designer Axel Enthoven. It is not a fortunate or happy unplanned coincidence but a solid oak chair, stackable, not trendy nor fashionable but tested to the real world. This is a chair with class, the perfect combination of a simple design and a classic look. The Grangala chair offers maximum comfort.



GRANGALA
THE FAMILY

GRANGALA



GRANGALA *tub*



GRANGALA +A





11. NEW GALA



SPECIFICATIONS

Material Oak & Beech

Finishing Lacquer, paint, stain

Designer Axel Enthoven

Fabrics Kvadrat, Camira, Gabriel...

Chair Stackable

Extra Square stitching

* **note** ZET offers other configurations as well. Just ask us!

ZET

ABOUT THE DESIGN

The New Gala chair was born in the creative mind of the famous Antwerp designer Axel Enthoven. It is not a fortunate or happy unplanned coincidence but a solid oak chair, stackable, not trendy nor fashionable but tested to the real world. This is a chair with class, the perfect combination of a simple design and a classic look. The New Gala chair offers maximum comfort.



71

COLLECTION

* Stackable



NEW GALA
THE FAMILY

NEW GALA



NEW GALA ST



NEW GALA +A (ST)



NEW GALA KL62



NEW GALA KL82



NEW GALA tub



NEW GALA lounge



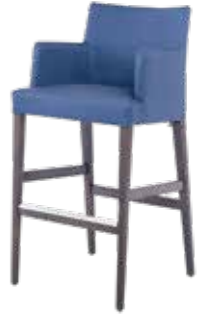
NEW GALA lounge low



NEW GALA lounge KL62



NEW GALA lounge KL82





12. LISA



SPECIFICATIONS

Material Oak & Beech

Finishing Lacquer, paint, stain

Designer ZET design team

Fabrics Kvadrat, Camira, Gabriel...

***note** ZET offers other configurations as well. Just ask us!

ABOUT THE DESIGN

A functional but elegant chair. Suitable for every room. The Lisa chair, designed by our own ZET design team, is a functional - and at the same time - very refined and elegant chair. It consists of solid legs in beech. The seat and backrest are fully upholstered which gives this chair a soft appearance. You can choose from different fabrics and can also cover the backrest and seat differently.



13. LUKA



SPECIFICATIONS

Material Oak & Beech

Finishing Lacquer, paint, stain

Designer ZET design team

Fabrics Kvadrat, Camira, Gabriel...

* **note** ZET offers other configurations as well. Just ask us!

ABOUT THE DESIGN

A functional but elegant chair. Suitable for every room. The Luka chair, designed by our own ZET design team, is a functional and at the same time very refined and elegant chair. It consists of solid legs in beech. The seat and backrest are fully upholstered which gives this chair a soft appearance. You can choose from different fabrics and can also cover the backrest and seat differently.

ZET



14. GRACE



SPECIFICATIONS

Material Oak

Finishing Lacquer, paint, stain

Designer Axel Enthoven

Fabrics Kvadrat, Camira, Gabriel...

***note** ZET offers other configurations as well. Just ask us!

ABOUT THE DESIGN

The Grace chair, displays a beauty which may compete with the former Princess of Monaco. Enthoven concentrated on our aging society and developed a highly aesthetic fresh chair for the coming 65 plus generation, leaving behind the obsolete seats and sofas. The Grace chair aims specifically at the healthcare sector. The shape of the shell suits your back perfectly.



GRACE
THE FAMILY



GRACE



GRACE +A



GRACE 01



GRACE 01 +A





15. HOST



SPECIFICATIONS

Material Beech

Finishing Lacquer, paint, stain

Designer Studio Segers

Fabrics Kvadrat, Camira, Gabriel...

***note** ZET offers other configurations as well. Just ask us!

ABOUT THE DESIGN

This handy, stackable chair was designed by Studio Segers. Do not expect too many bells and whistles, but enjoy this pure chair characterized by its simplicity. This chair was designed with focus on durability and firmness and excels in sleek design. According to Studio Segers, a chair is at the service of body and architecture and that is exactly what The Host chair does.

ZET



HOST
THE FAMILY

HOST



HOST ST



HOST +A



HOST HB



HOST HB +A



WOOD COLORS

Standard stain finishings on **beech**

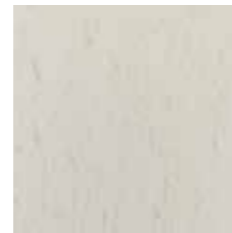
Natural



White wash



Clear white



Milkshake



Ice blue



Cool mint



Rose flower



Carotene



Ruby red



Dark wenge



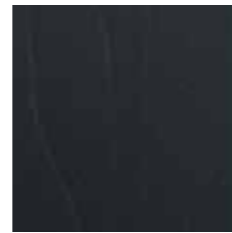
Ultra jeans



Stone grey



Off black



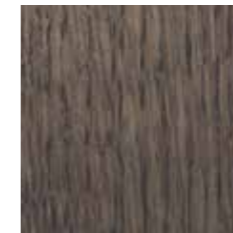
***note** Wood, naturally grown, is not a synthetic material. Each trunk has a different structure and color, which can lead to appropriate differences in the polishing. Therefore we cannot accept complaints related to nature-conditioned differences.

Standard stain finishings on **oak**

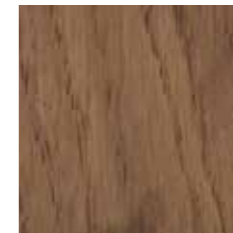
Natural



Old oak



Tobacco oak



Bright walnut



Horizon yellow



Off black



Chalk white



Grey oak



***note** Wood, naturally grown, is not a synthetic material. Each trunk has a different structure and color, which can lead to appropriate differences in the polishing. Therefore we cannot accept complaints related to nature-conditioned differences.

We got your back

ZET

<https://zet.furniture>

hello@zet.furniture

Beverensestraat 33 - 8850

Ardoorie

Belgian design furniture.